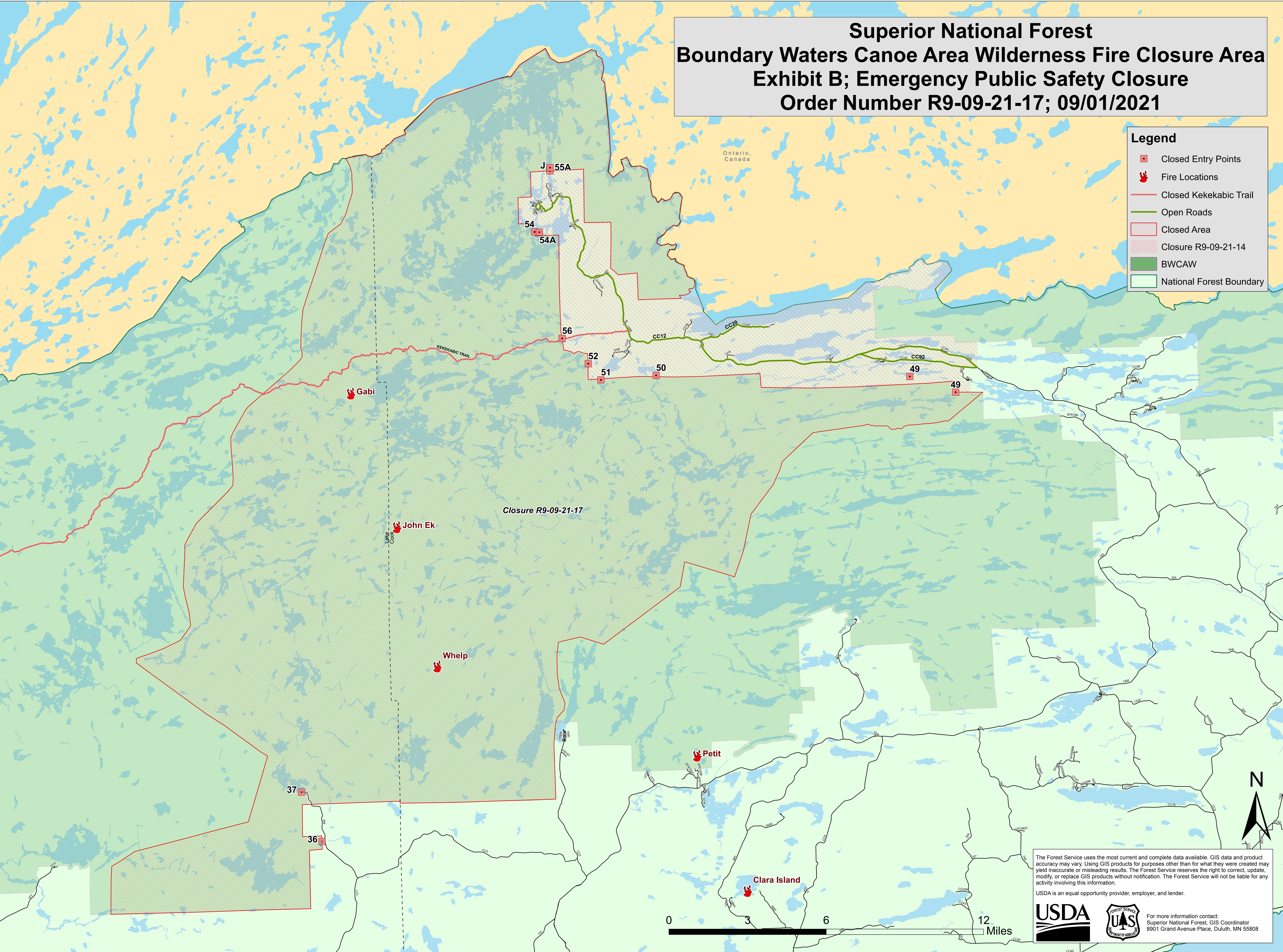


Superior National Forest Boundary Waters Canoe Area Wilderness Fire Closure Area Exhibit B; Emergency Public Safety Closure Order Number R9-09-21-17; 09/01/2021

Legend

- Closed Entry Points
- 🔥 Fire Locations
- Closed Kekekabic Trail
- Open Roads
- Closed Area
- Closure R9-09-21-14
- BWCAW
- National Forest Boundary



The Forest Service uses the most current and complete data available. GIS data and product accuracy may vary. Using GIS products for purposes other than for what they were created may yield inaccurate or misleading results. The Forest Service reserves the right to correct, update, modify, or replace GIS products without notification. The Forest Service will not be liable for any activity involving this information.

USDA is an equal opportunity provider, employer, and lender.

USDA For more information contact:
Superior National Forest, GIS Coordinator
8901 Grand Avenue Place, Duluth, MN 55808