



Camp House and Jenkins Creek Fires Update

Friday, May 16, 2025

Eastern Area Complex Incident Mgt. Team Incident Commander: Brian Jenkins (effective 05/14/2025)

Fire Information: 218-206-6805 9 a.m. to 8 p.m.

Inciweb: <https://inciweb.wildfire.gov/incident-information/mnmns-camp-house>

Email: 2025.camphouse@firenet.gov

Camp House Fire Quick Facts

Size: 14,852 acres **Location:** Brimson, MN
Containment: 0% **Cause:** Under investigation
Start Date: 05/11/2025

Personnel: 264

Camp House Fire: Dozer crews advanced a containment line on the south end and west side of the fire and will implement direct attacks on those areas as conditions permit. A concerted effort has been made to protect the communications tower east of Bassett Lake. Crews are assessing the viability of setting up structure protection near Fairbanks. The fire is fueled by mixed forest vegetation and spruce budworm-infested forest stands. Dead and distressed balsam and aspen prone to ignition pose a significant hazard for firefighters. "Hot Shot" crews are in the field. This fire has not grown, and the reduced acreage reported is the result of a more accurate scan by infrared reconnaissance flights.

Jenkins Creek Fire Quick Facts

Size: 15,571 acres **Location:** T57N R13W Section 3
Containment: 0% **Cause:** Under investigation
Start Date: 05/12/2025

Personnel: 63

Jenkins Creek Fire: The hot, windy weather in recent days led to some extreme fire behavior with crowning, torching and spread earlier in the week. Thursday night storms have mitigated some of that. Protection of the Skibo and Hoyt Lakes communities remains a priority operational objective. Firefighters continue to assess fire suppression control-line locations and dozers are extending and connecting those lines already developed. "Hot Shot" crews have been inserted on this fire. The acreage total reflects accurate reports obtained via infrared reconnaissance flights.

Evacuations and Road Closures: St. Louis County has closed eastbound Highway 16 at Camp 26 Trail Track and County Hwy 44 is closed to northbound traffic. (Highway 55 is still open.) Eastbound Highway 16 and southbound Brimson-Toimi Rd/6205 Rd are closed at that intersection. Westbound Hwy 16 at County Hwy 2. County Rd. 110 (Hwy 11) is closed outside Hoyt Lakes at the Moose Line. Eastbound Forest Rte. 129 is also closed at the Moose Line.

Evacuation information for St. Louis County: <https://tinyurl.com/StLouisCoSituationMap>. For Lake County: <https://tinyurl.com/LakeCoMnEvacuationMap>.

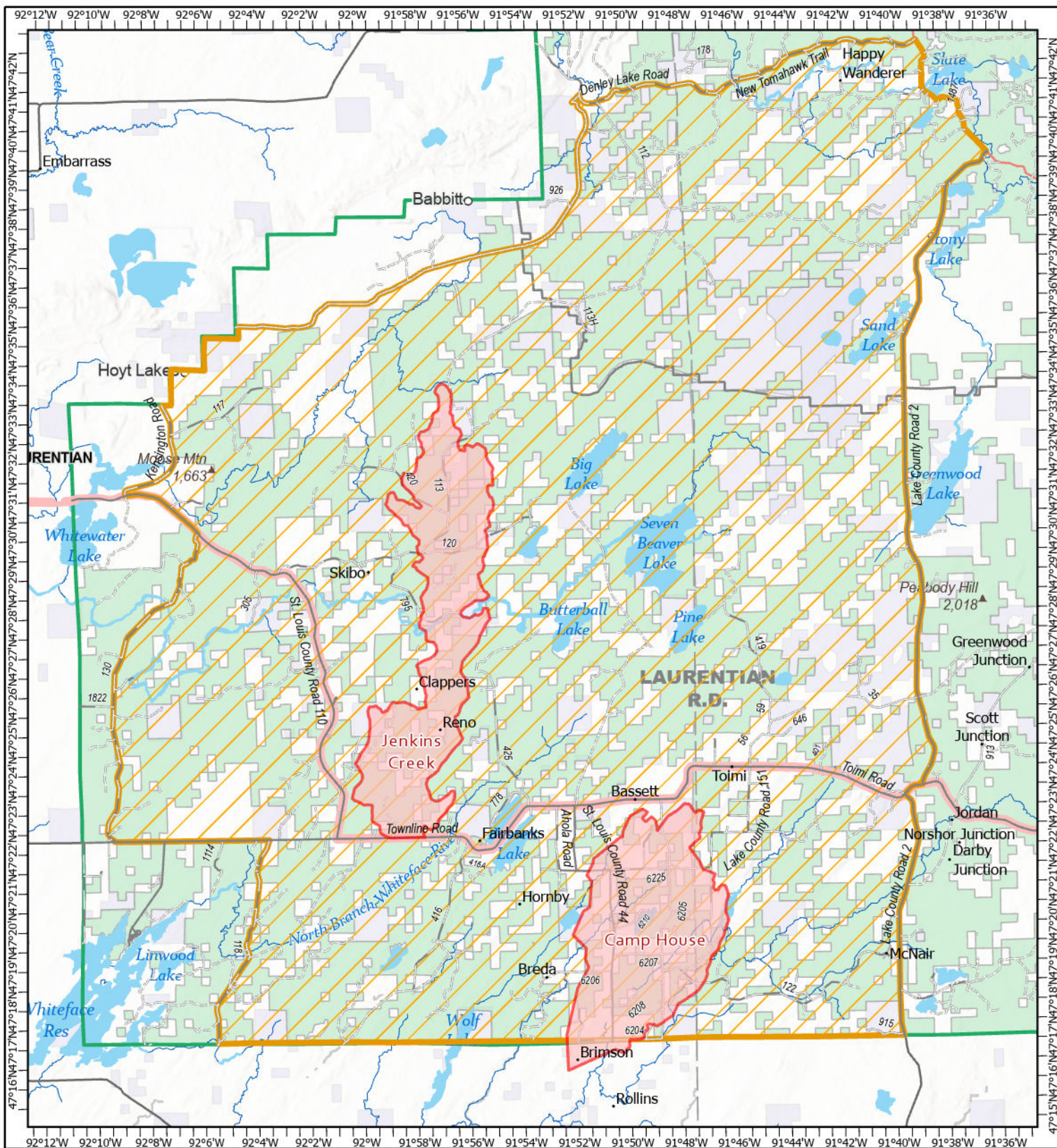
National Weather Service Forecast: Showers will continue through the morning and afternoon and may redevelop between 7 pm and 1am. The predicted high is 55F; overnight low will be around 44F. A 10 mph wind will likely shift from the south to the north sometime in the afternoon, and occasional gusts may approach 20 mph. Humidity: 70%.

Portions of the Laurentian Ranger District are closed. Emergency Forest Order 09-09-25-05 prohibits visitor entry to some camp sites and recreational areas. See Forest Order Exhibit A for a list of closure areas and Exhibit B for a map of the area. The closure may be modified or extended as conditions allow.

<https://www.fs.usda.gov/r09/superior/alerts/forest-order-09-09-25-05-brimson-complex-emergency-closure>

Burning Restrictions: For current burning restrictions, see https://www.dnr.state.mn.us/forestry/fire/firerating_restrictions.html

NOTE: The causes of both fires remain under investigation. **Also note:** Offers of donations by the public, though greatly appreciated, should be referred to the local Red Cross or Salvation Army agencies.



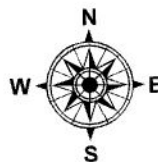
Public Information

Camp House
MN-2QS-001729
05/16/2025 Day

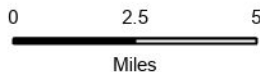
14852 acres at 5/15/2025 1400hrs

Jenkins Creek
MN-SUF-001789
05/16/2025 Day

15,570 acres at 5/14/2025 0800hrs



- Closure Areas
- Wildfire Perimeter
- Paved Road
- Gravel Road
- Dirt (Not Paved)
- Road, Not Maintained for Passenger Car



1:250,000 | EA IMT | 5/15/2025 1706
Acres from IR/GPS Acres from IR
North American 1983 Datum, Lat/Long Grid