



# Camp House and Jenkins Creek Fires Update

Sunday, May 18, 2025

Eastern Area Complex Incident Mgt. Team Incident Commander: Brian Jenkins  
(effective 05/14/2025)

**Fire Information:** 218-206-6805 9 a.m. to 8 p.m.

**Inciweb:** <https://inciweb.wildfire.gov/incident-information/mnmns-camp-house>

**Email:** [2025.camphouse@firenet.gov](mailto:2025.camphouse@firenet.gov)

## Camp House Fire Quick Facts

**Size:** 12,277 acres

**Start Date:** 05/11/2025

**Location:** Brimson, MN

**Containment:** 31%

**Personnel:** 329

**Cause:** Under investigation

**Camp House Fire:** Yesterday provided favorable conditions for crews and dozers to build containment lines on the south end and west side of the fire. Firefighters will continue to work from these areas to strengthen line on the east and north sides of the fire today. Dead and distressed trees and downed power lines continue to pose significant hazards for firefighters. Crews will use infrared technology to identify and extinguish “hot spots” within the fire’s current perimeter. This fire has not grown in the past four days. Cool temperatures and precipitation have been beneficial in battling the fire, but dry conditions and strong, shifting winds are forecast for the coming days. As a result of the weather yesterday, fire activity was relatively low.

## Jenkins Creek Fire Quick Facts

**Size:** 16,332 acres

**Start Date:** 05/12/2025

**Location:** T57N R13W Section 3

**Containment:** 0%

**Personnel:** 193

**Cause:** Under investigation

**Jenkins Creek Fire:** Protection of the Skibo and Hoyt Lakes communities remains a priority objective. On Saturday, firefighters and dozer operators extended fire containment lines along the northwest edge and southern end of the fire. Adding to existing hose lays and prioritizing structure protection in this area will continue today in preparation for the return of potential drier and gustier conditions this week.

## Evacuation, Road Closure, and Homeowner Access information for St. Louis County:

<https://tinyurl.com/StLouisCoSituationMap>. **For Lake County:** <https://tinyurl.com/LakeCoMnEvacuationMap>.

Homeowners and property owners will have access to their properties from 10:00 a.m. until noon today (Sunday).

Check in with sheriffs’ deputies at Hugo’s or the intersection of CR 16 and Forest Hwy 11, and bring proof of residency or ownership, and call 2-1-1 to report your exit from the evacuation zone. Hoyt Lake residents remain at the “Set” level of preparedness for now.

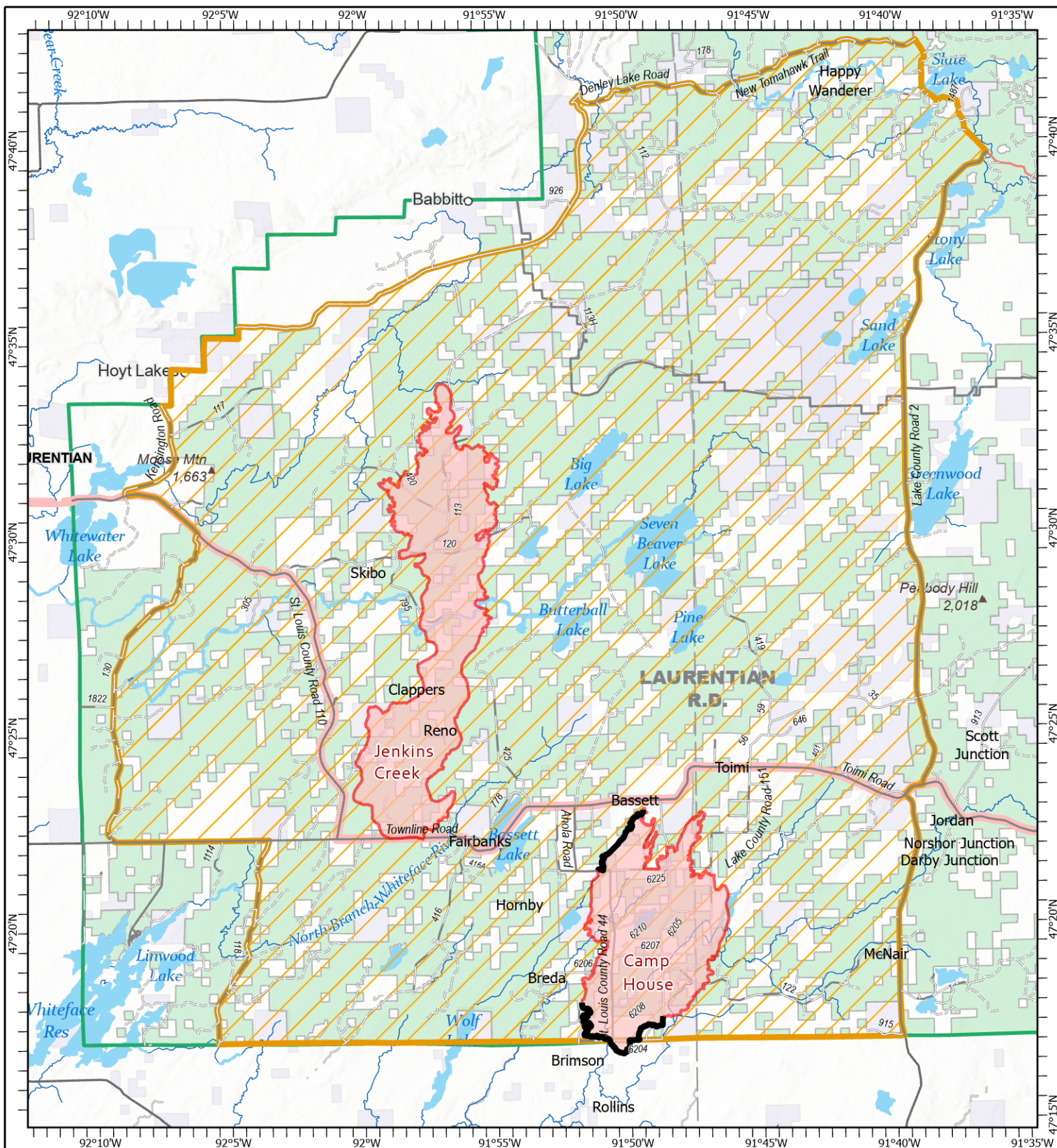
**Community Meeting:** A meeting for the Jenkins Creek and Camphouse Road wildfires will be held on Monday 5/19 at 6 p.m., at the Mesabi East School District High School Auditorium—601 N 1st St W, Aurora, MN. The meeting will be live-streamed, and a link will be shared on the MNICS and Superior National Forest Facebook Pages.

**National Weather Service Forecast:** Some morning showers are expected today. Temperatures will be cool, with a high of 46 and an overnight low of 29 degrees. Light winds will be out of the north-northeast at around 6 to 9 mph, with gusts of around 15 mph.

**Portions of the Laurentian Ranger District are closed.** Emergency Forest Order 09-09-25-05 prohibits visitor entry to some camp sites and recreational areas. See Forest Order Exhibit A for a list of closure areas and Exhibit B for a map of the area. The closure may be modified or extended as conditions allow.

<https://www.fs.usda.gov/r09/superior/alerts/forest-order-09-09-25-05-brimson-complex-emergency-closure>

**Current Burning Restrictions:** [https://www.dnr.state.mn.us/forestry/fire/firerating\\_restrictions.html](https://www.dnr.state.mn.us/forestry/fire/firerating_restrictions.html)



## Public Information

Camp House  
MN-2QS-001729  
05/18/2025 Day

Jenkins Creek  
MN-SUF-001789  
05/18/2025 Day



- Closure Areas
- Contained Fire Edge
- Wildfire Perimeter
- Paved Road
- Gravel Road
- Dirt (Not Paved)
- Road, Not Maintained for Passenger Car

12,277 acres at 5/17/2025 2000hrs

16,332 acres at 5/16/2025 2000hrs



1:250,000 | EA IMT | 5/17/2025 2149  
Acres from IR and GPS Acres from IR and GPS  
North American 1983 Datum, Lat/Long Grid

