



# Camp House and Jenkins Creek Fires Update

Sunday, May 19, 2025

Eastern Area Complex Incident Mgt. Team Incident Commander: Brian Jenkins  
(effective 05/14/2025)

**Fire Information:** 218-206-6805 9 a.m. to 8 p.m.

**Inciweb:** <https://inciweb.wildfire.gov/incident-information/mnmns-camp-house>

**Email:** [2025.camphouse@firenet.gov](mailto:2025.camphouse@firenet.gov)

**Community Meeting:** A meeting for the Jenkins Creek and Camphouse Road wildfires will be held today at 6 p.m., at the Mesabi East School District High School Auditorium—601 N 1st St W, Aurora, MN. The meeting will be live streamed on the EA IMT YouTube channel. The link will be shared on the MNICS and Superior National Forest Facebook pages.

## Camp House Fire Quick Facts

**Size:** 12,277 acres

**Location:** Brimson, MN

**Personnel:** 402

**Start Date:** 05/11/2025

**Containment:** 40%

**Cause:** Under investigation

**Camp House Fire:** Great progress was made all along the fire's perimeter and more handcrews arrived today, allowing other crews to be moved to active areas of the Jenkins Fire. Crews were working from well-established points of entry (anchor points). They used hand tools and dozers to make headway in both directions from these anchor points, making excellent progress. Hotshot crews and dozers were also able to connect the line to both sides of Brimson Lake on the south end of the fire. On the north end, firefighters continued to build protection around structures and key infrastructure. This work will continue today with helicopter and drone support as well. Masticating equipment is clearing snags and downed trees from areas near roads and within the fire perimeter.

## Jenkins Creek Fire Quick Facts

**Size:** 16,332 acres

**Location:** T57N R13W Section 3

**Personnel:** 199

**Start Date:** 05/12/2025

**Containment:** 6%

**Cause:** Under investigation

**Jenkins Creek Fire:** With drier and gustier weather predicted, protection of the Skibo and Hoyt Lakes communities remains a priority. Great progress was made over the weekend as personnel took advantage of the cooler, wetter conditions. Firefighters continued to add existing hose lays and prioritize pre-emptive structure protection. Multiple hotshot crews are working the perimeter and interior of the fire. They will be supported by helicopters and drones to detect and catch flare-ups that may occur today

## Evacuation, Road Closure, and Homeowner Access information for St. Louis County:

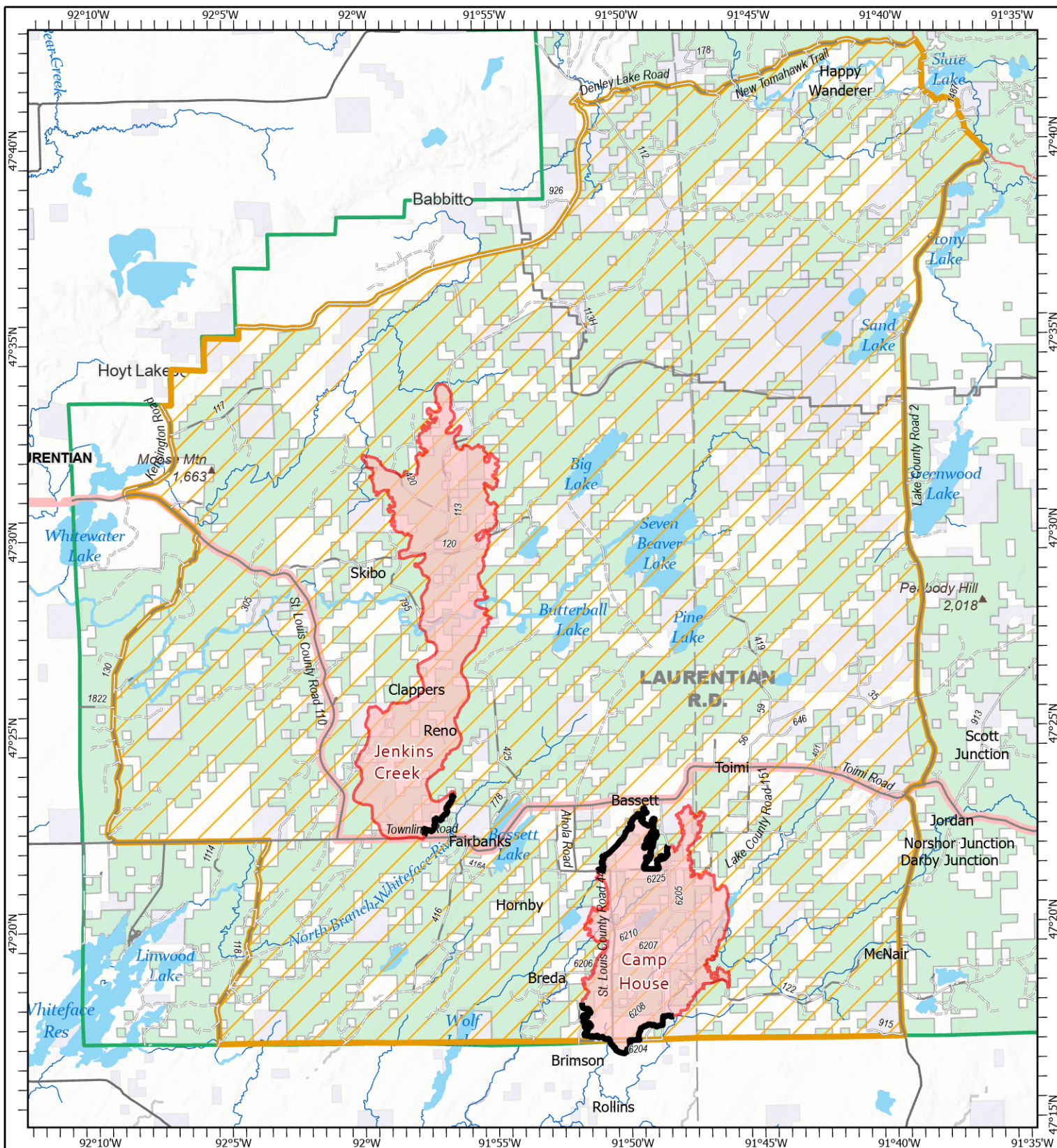
<https://tinyurl.com/StLouisCoSituationMap>. For Lake County: <https://tinyurl.com/LakeCoMnEvacuationMap>. Some changes to evacuations levels were announced by the St. Louis County Sheriff yesterday. St. Louis County Sheriff's office announced that Hwy-16 (Town Line Rd), is reopened to through traffic. Vehicles should avoid stopping anywhere in the evacuation "Go" zones to minimize exposure and risk. Drivers are also asked to take extra care when driving through due to the continued presence of emergency crews, utility crews, and other curious or distracted drivers.

**National Weather Service Forecast:** Today will be sunny with a high of 49 and an overnight low of around 30 degrees. Winds will pick up out of the east blowing a steady 6 to 15 mph, with gusts up to 33 mph. Humidity is also expected to drop to as low as 26%.

**Portions of the Laurentian Ranger District are closed.** Emergency Forest Order 09-09-25-05 prohibits visitor entry to some camp sites and recreational areas. See Forest Order Exhibit A for a list of closure areas and Exhibit B for a map of the area. The closure may be modified or extended as conditions allow.

<https://www.fs.usda.gov/r09/superior/alerts/forest-order-09-09-25-05-brimson-complex-emergency-closure>

**Current Burning Restrictions:** [https://www.dnr.state.mn.us/forestry/fire/firerating\\_restrictions.html](https://www.dnr.state.mn.us/forestry/fire/firerating_restrictions.html)



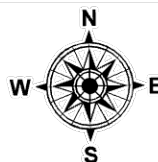
## Public Information

Camp House  
MN-2QS-001729  
05/19/2025 Day

12,177 acres at 5/18/2025 @

Jenkins Creek  
MN-SUF-001789  
05/19/2025 Day

16,631 acres at 5/18/2025 @



1:250,000 | EA IMT | 5/18/2025 2040  
Acres from IR and GPS Acres from IR and GPS  
North American 1983 Datum, Lat/Long Grid

- Closure Areas
- Contained Fire Edge
- Wildfire Perimeter
- Paved Road
- Gravel Road
- Dirt (Not Paved)
- Road, Not Maintained for Passenger Car