



Camp House and Jenkins Creek Fires Update

Wednesday, May 21, 2025

Eastern Area Complex Incident Mgt. Team Incident Commander: Brian Jenkins (effective 05/14/2025)

Fire Information: 218-206-6805 9 a.m. to 8 p.m.

Inciweb: <https://inciweb.wildfire.gov/incident-information/mnmns-camp-house>

Email: 2025.camphouse@firenet.gov

Camp House Fire Quick Facts

Size: 12,071 acres

Start Date: 05/11/2025

Location: Brimson, MN

Containment: 73%

Personnel: 365

Cause: Under investigation

Camp House Fire: Firefighters' steady effort in battling the Camp House Fire over the past week paid off as all existing lines held despite strong winds from the east. Overnight precipitation continued to aid in cooling the fire. Two hotshot crews will continue to work in some of the more challenging terrain to finish connecting portions of the containment line. Other crews will begin moving deeper into the interior from the southern end of the fire to find and put out any smoldering areas inside the containment line. The fire initially started on private land and moved into national forest system lands, and a Forest closure (more info below) is still in effect.

Jenkins Creek Fire Quick Facts

Size: 16,748 acres

Start Date: 05/12/2025

Location: T57N R13W Section 3

Containment: 13%

Personnel: 223

Cause: Human Caused

- **Jenkins Creek Fire:** Crews held line around the fire despite the strong, gusting winds. Unmanned Aerial Systems (UAS) flew five flights during breaks in the wind, detecting areas with heat that were then attacked by ground crews. Today, additional firefighters will be moved from the Camp House Fire to the Jenkins Fire to make a push to connect existing containment lines. The heavy equipment that was working along the southern edge of the fire to masticate (chop up) large fallen debris into wood chips will progress north today. The debris that is chipped up will not burn as hot should fire reach the wood chippings. Over time, the woody chip debris will decompose quicker. While the initial investigation into the Jenkins Creek Fire indicates the fire is related to a human cause, the investigation is ongoing.

Evacuation, Road Closure, and Homeowner Access information for St. Louis County:

<https://tinyurl.com/StLouisCoSituationMap>. For Lake County: <https://tinyurl.com/LakeCoMnEvacuationMap>.

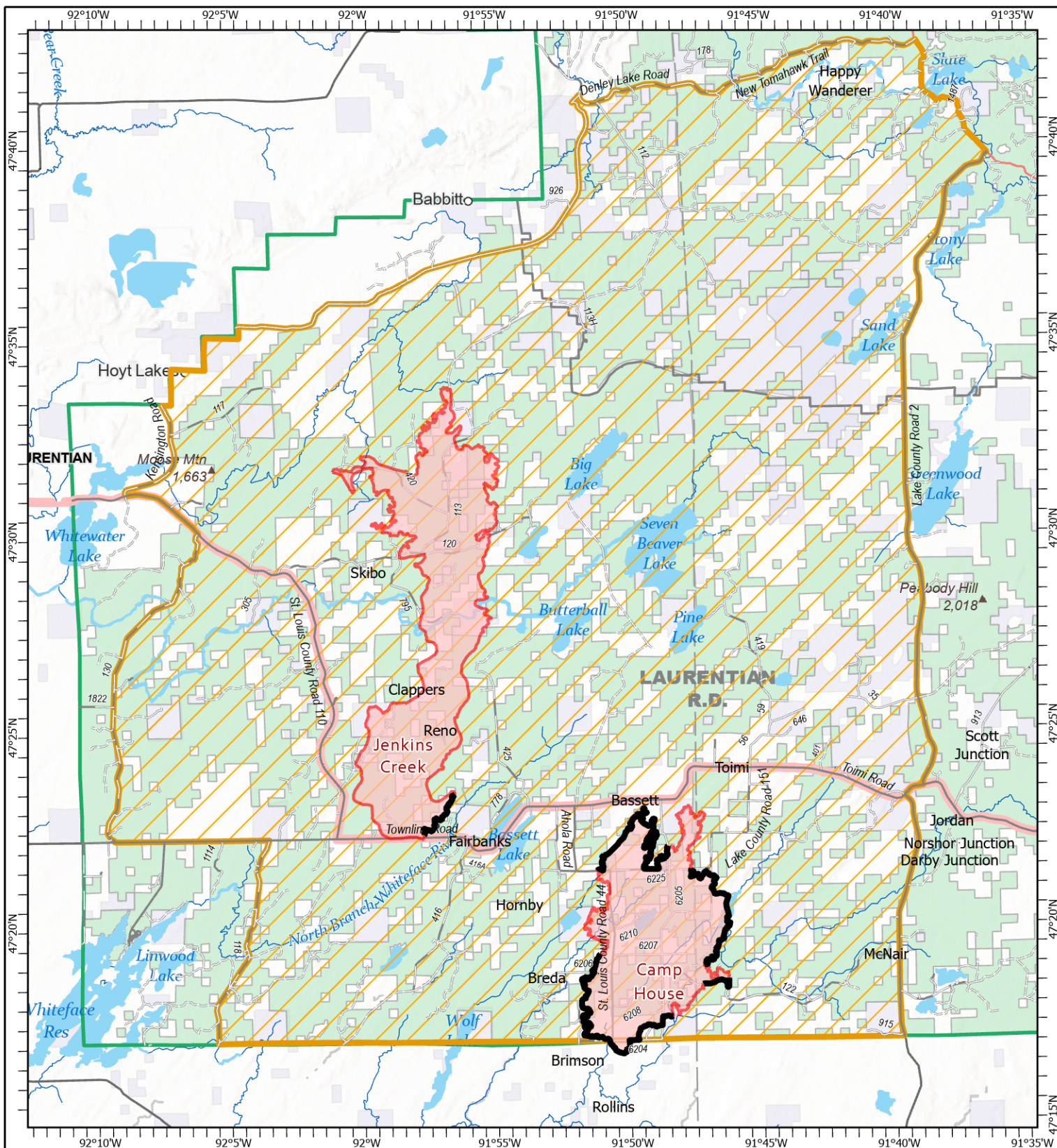
Effective Wednesday, May 21, at 8 a.m. Conditions have improved enough that 13 evacuation zones that had been on "Go" status are being improved to "Set" status (zones 1-5, 9-12, and 17-20). Nine zones that had been on "Set" status are being improved to "Ready" status. (6-8, 13-16, 21-22). Please check the evacuation map if you're not sure which zone you're in. <https://slcgis.maps.arcgis.com/.../lookup/index.html>.

Hwy-44 and CR-110/FH-11 are reopening to through-traffic. Skibo Road and Forest Road 113 will remain closed eastbound from CR-110/FH-11. Bundle Lake Road is closed northbound from Hwy-16/Town Line Rd. Property owners are urged to take extra caution in the area. Be aware that the burned areas may still show smoke from various stumps and debris - this is not of concern when inside the already burned area.

National Weather Service Forecast: Clearing skies with a high of 57 and 37% humidity are expected today. Winds will be from the east, between 10 and 14 mph with gusts up to 27 mph.

Laurentian Ranger District closures: Emergency Forest Order 09-09-25-05 prohibits visitor entry to some camp sites and recreational areas. See Forest Order Exhibit A for a list of closure areas and Exhibit B for a map of the area. The closure may be modified or extended as conditions allow. <https://www.fs.usda.gov/r09/superior/alerts/forest-order-09-09-25-05-brimson-complex-emergency-closure>

Current Burning Restrictions: https://www.dnr.state.mn.us/forestry/fire/firerating_restrictions.html



Public Information

Camp House
MN-2QS-001729
05/21/2025 Day

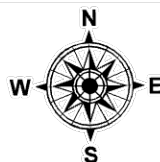
Jenkins Creek
MN-SUF-001789
05/21/2025 Day

12,071 acres at 5/20/2025 2020hrs

16,748 acres at 5/20/2025 2020hrs



1:250,000 | EA IMT | 5/20/2025 2124
Acres from IR and GPS Acres from IR and GPS
North American 1983 Datum, Lat/Long Grid



- Closure Areas
- Contained Fire Edge
- Wildfire Perimeter
- Paved Road
- Gravel Road
- Dirt (Not Paved)
- Road, Not Maintained for Passenger Car