



Camp House and Jenkins Creek Fires Update

Thursday, May 22, 2025

Eastern Area Complex Incident Mgt. Team

Incident Commander: Brian Jenkins

Fire Information: 218-206-6805 9 a.m. to 8 p.m.

Inciweb: <https://inciweb.wildfire.gov/incident-information/mnmns-camp-house>

Email: 2025.camphouse@firenet.gov

Camp House Fire Quick Facts

Size: 12,071 acres

Location: Brimson, MN

Personnel: 363

Start Date: 05/11/2025

Containment: 90%

Cause: Under investigation

Camp House Fire: This fire initially started on private land on 5/11 and moved onto the Superior National Forest. Since the initial attack, a full-suppression and direct containment strategy has been utilized; and has proven very successful. Yesterday, firefighting crews and equipment working around the Camp House Fire made excellent progress on the entire perimeter of the fire's footprint. Firefighters walking within the wildfire's burned interior, near the line, continued to search for and put out smoldering stumps and roots.

Size: 16,748 acres

Location: T57N R13W Section 3

Personnel: 226

Start Date: 05/12/2025

Containment: 32%

Cause: Human Caused

Jenkins Creek Fire: Firefighters continued to successfully add containment yesterday and overnight. The southern edge of the fire is now considered secure. Crews on both the east and west sides of the fire were able to connect control lines along each front. Unmanned Aerial Systems (UAS) continued to fly and assist firefighters in finding any areas that needed attention. The engines and crews dedicated to structure protection are expected to complete that work today. Two helicopters are available to assist crews with their work today. Heavy equipment doing chipping work is also nearing completion of the fuel break and fuel reduction work along Forest Road 113. While the initial investigation into the Jenkins Creek Fire indicates the fire is related to a human cause, the investigation is ongoing.

Evacuation, Road Closure, and Homeowner Access information for St. Louis County:

<https://tinyurl.com/StLouisCoSituationMap>. For Lake County: <https://tinyurl.com/LakeCoMnEvacuationMap>.

St. Louis County: Conditions improved enough that 13 evacuation zones that had been on "Go" were changed to "Set" status Tuesday night. Hwy-44 and CR-110/FH-11 reopened to through-traffic yesterday. Skibo Road and Forest Road 113 will remain closed eastbound from CR-110/FH-11. Bundle Lake Road is closed northbound from Hwy-16/Town Line Rd.

Lake County: The Lake County Sheriff's office announced that all evacuations were lifted yesterday.

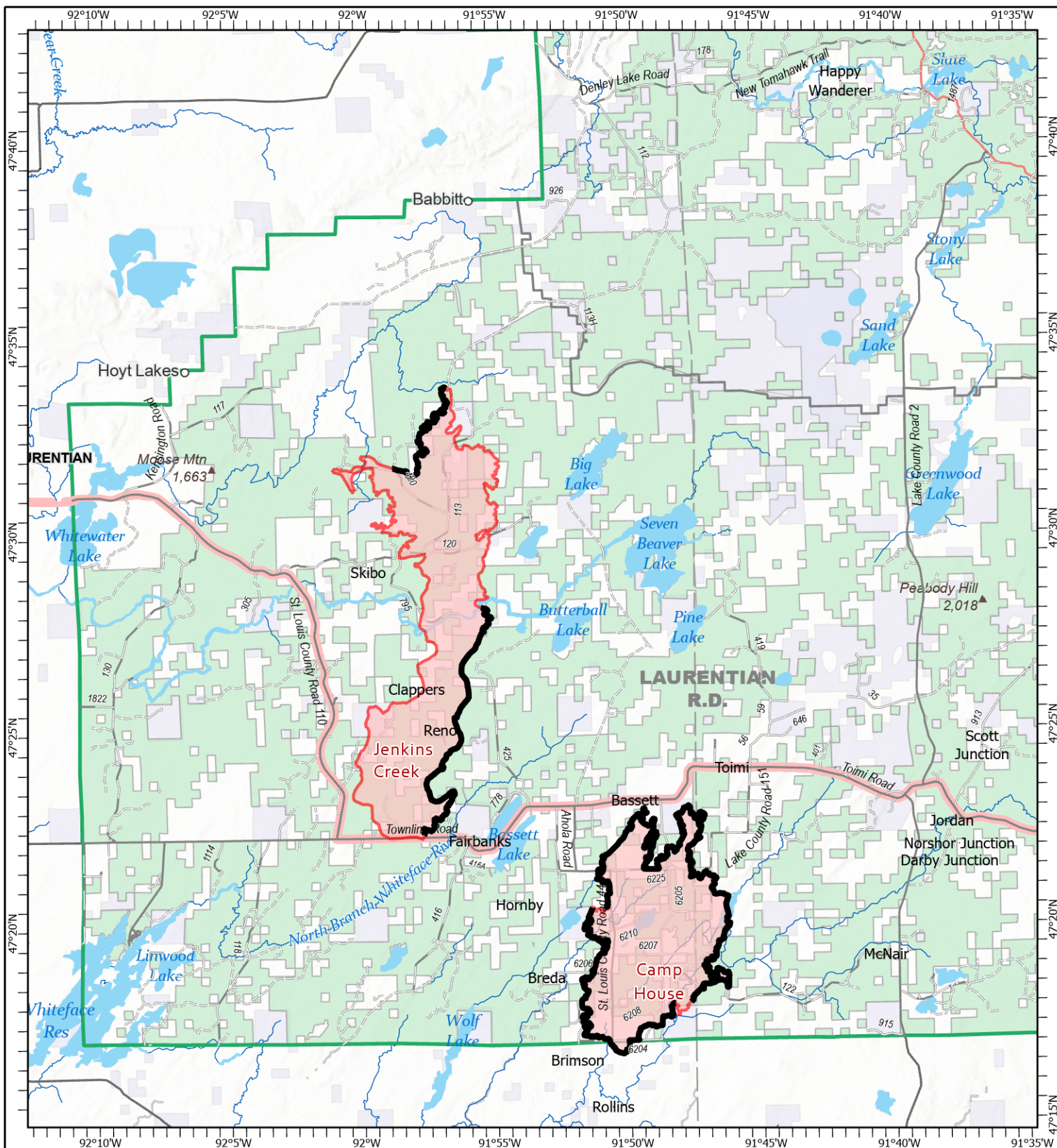
National Weather Service Forecast: Clearing skies with a high of 57 and 37% humidity are expected today. Winds will be from the east, between 10 and 14 mph with gusts up to 27 mph.

Laurentian Ranger District closures: Emergency Forest Order 09-09-25-05 prohibits visitor entry to some camp sites and recreational areas. See Forest Order Exhibit A for a list of closure areas and Exhibit B for a map of the area. The closure may be modified or extended as conditions allow. <https://www.fs.usda.gov/r09/superior/alerts/forest-order-09-09-25-05-brimson-complex-emergency-closure>

Current Burning Restrictions: https://www.dnr.state.mn.us/forestry/fire/firerating_restrictions.html

Public Reminder: "If you fly, we can't"

When someone flies a drone near the fire, it creates a safety hazard that shuts down aerial operations.



Public Information

Camp House
MN-2QS-001729
05/22/2025 Day

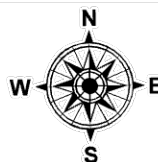
Jenkins Creek
MN-SUF-001789
05/22/2025 Day

12,071 acres at 5/20/2025 2020hrs

16,748 acres at 5/20/2025 2020hrs



1:250,000 | EA IMT | 5/21/2025 2108
 Acres from IR and GPS Acres from IR and GPS
 North American 1983 Datum, Lat/Long Grid



- Contained Fire Edge
- Wildfire Perimeter
- Paved Road
- Gravel Road
- Dirt (Not Paved)
- Road, Not Maintained for Passenger Car