



Camp House and Jenkins Creek Fires Update

Friday, May 23, 2025

Eastern Area Complex Incident Mgt. Team

Incident Commander: Brian Jenkins

Fire Information: 218-206-6805 9 a.m. to 8 p.m.

Inciweb: <https://inciweb.wildfire.gov/incident-information/mnmns-camp-house>

Email: 2025.camphouse@firenet.gov

CAMP HOUSE FIRE

Size: 12,071 acres

Start Date: 05/11/2025

Location: Brimson, MN

Containment: 90%

Personnel: 311

Cause: Under investigation

A full suppression strategy remains in place for firefighters and support staff working on the Camp House Fire. Crews continued patrolling and searching for any remaining smoldering hotspots near the containment lines. Containment around the perimeter appeared strong and holding well. Yesterday, personnel focused on suppression repair and will continue that work today. This phase is essential for helping the land recover more quickly, especially in areas where bulldozers and other equipment were used to prevent fire growth. Suppression repair includes tasks like restoring natural drainage, stabilizing soil, and reducing the long-term impact of firefighting operations.

JENKINS CREEK FIRE

Size: 16,781 acres

Start Date: 05/12/2025

Location: T57N R13W Section 3

Containment: 47%

Personnel: 271

Cause: Human Caused

On Thursday, crews continued to make steady progress building containment lines around the Jenkins Creek Fire. Today, firefighters will focus on identifying gaps and completing the remaining sections of the construction to close the perimeter fully. Infrared (IR) technology helped detect and extinguish smoldering materials not visible to the naked eye, strengthening existing containment lines and reducing the risk of flare-ups. Mastication equipment remains active, clearing large, woody debris to reduce fuel and support long-term forest health. Most other heavy equipment has completed its assignments and is being demobilized. Helicopters remain assigned to support water drops, reconnaissance, or other fire response needs throughout the day.

Evacuation, Road Closure, and Homeowner Access information

St. Louis County: <https://tinyurl.com/LakeCoMnEvacuationMap>: Yesterday, residents of Skibo were allowed to return to their property. Skibo Road will remain closed to all other traffic. Hwy-44 and CR-110/FH-11 reopened to through-traffic. Skibo Road and Forest Road 113 will remain closed eastbound from CR-110/FH-11. Bundle Lake Road is closed northbound from Hwy-16/Town Line Rd.

Lake County: <https://tinyurl.com/StLouisCoSituationMap>. The Lake County Sheriff's office announced that all evacuations have been lifted in that county.

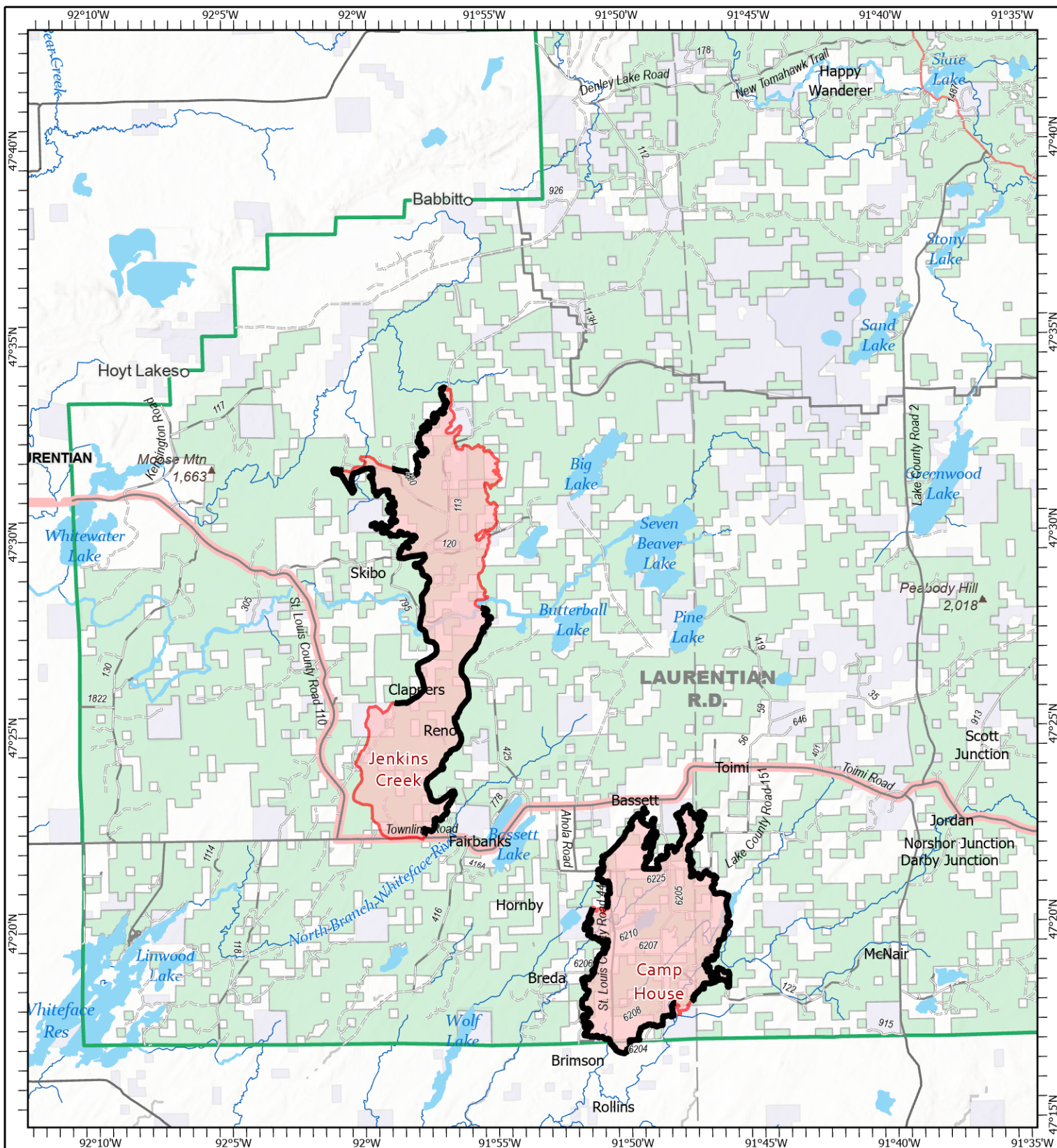
National Weather Service Forecast: A high of 64 with 25% humidity is expected today. Winds will be five to seven mph from the north.

Laurentian Ranger District closures: Emergency Forest Order 09-09-25-05 prohibits visitor entry to some camp sites and recreational areas. See Forest Order Exhibit A for a list of closure areas and Exhibit B for a map. The closure may be modified or extended as conditions allow. <https://www.fs.usda.gov/r09/superior/alerts/forest-order-09-09-25-05-brimson-complex-emergency-closure>

Current Burning Restrictions: https://www.dnr.state.mn.us/forestry/fire/firerating_restrictions.html

Public Reminder: "If you fly, we can't."

When someone flies a drone near the fire, it creates a safety hazard that shuts down aerial operations.



Public Information

Camp House
MN-2QS-001729
05/23/2025 Day

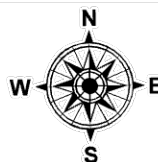
Jenkins Creek
MN-SUF-001789
05/23/2025 Day

12,071 acres at 5/20/2025 2020hrs

16,781 acres at 5/22/2025 1307hrs



1:250,000 | EA IMT | 5/22/2025 2031
Acres from IR and GPS Acres from IR and GPS
North American 1983 Datum, Lat/Long Grid



- Contained Fire Edge
- Wildfire Perimeter
- Paved Road
- Gravel Road
- Dirt (Not Paved)
- Road, Not Maintained for Passenger Car