



Camp House and Jenkins Creek Fires Update

Saturday, May 24, 2025

Eastern Area Complex Incident Mgt. Team

Incident Commander: Brian Jenkins

Fire Information: 218-206-6805 9 a.m. to 8 p.m.

Inciweb: <https://inciweb.wildfire.gov/incident-information/mnmns-camp-house>

Email: 2025.camphouse@firenet.gov

CAMP HOUSE FIRE

Size: 12,071 acres

Start Date: 05/11/2025

Location: Brimson, MN

Containment: 90%

Personnel: 245

Cause: Under investigation

Firefighters took advantage of the lower winds over the last few days and made excellent progress securing the line. Strengthening containment line and mopping up (putting out smoldering debris) occurred around the perimeter of the Camp House Fire yesterday. Patrolling and mop-up will continue today. Some crews working on Camp House and Jenkins Fire will also be assigned to respond to any new fires that start in the area. Suppression repair will continue today. With fire activity significantly reduced and containment increasing, some resources are now being reassigned to an Initial Attack group in preparation for the holiday weekend and remain ready to respond to any new fire starts if they occur.

JENKINS CREEK FIRE

Size: 16,089 acres

Start Date: 05/12/2025

Location: T57N R13W Section 3

Containment: 70%

Personnel: 237

Cause: Human Caused

Handcrews worked around the fire's perimeter on Friday, seeking out hotspots (areas that still have heat or were smoldering) and putting them out. Unmanned Aerial Systems (UAS) continued to be especially useful in locating the hotspots. Helicopters will continue to be available to assist firefighting operations, as needed, today and over the weekend. Clearing heavy debris that could fuel future wildfires remains a priority along the 113 Road, with mastication equipment continuing operations in that corridor today. Containment lines along the southwest and eastern flanks of the fire are holding well and appear to be highly effective. Crews continue to patrol and look for hotspots on these edges. Connecting and strengthening the line on the northwest portion of the fire will remain a primary focus today.

Evacuation, Road Closure, and Homeowner Access Information

St. Louis County: <https://tinyurl.com/LakeCoMnEvacuationMap>: Residents of Skibo were allowed to return to their property, but Skibo Road will remain closed to all other traffic. Hwy-44 and CR-110/FH-11 reopened to through-traffic. Skibo Road and Forest Road 113 will remain closed eastbound from CR-110/FH-11. Bundle Lake Road is closed northbound from Hwy-16/Town Line Rd.

Lake County: <https://tinyurl.com/StLouisCoSituationMap>. The Lake County Sheriff's office announced that all evacuations have been lifted in that county.

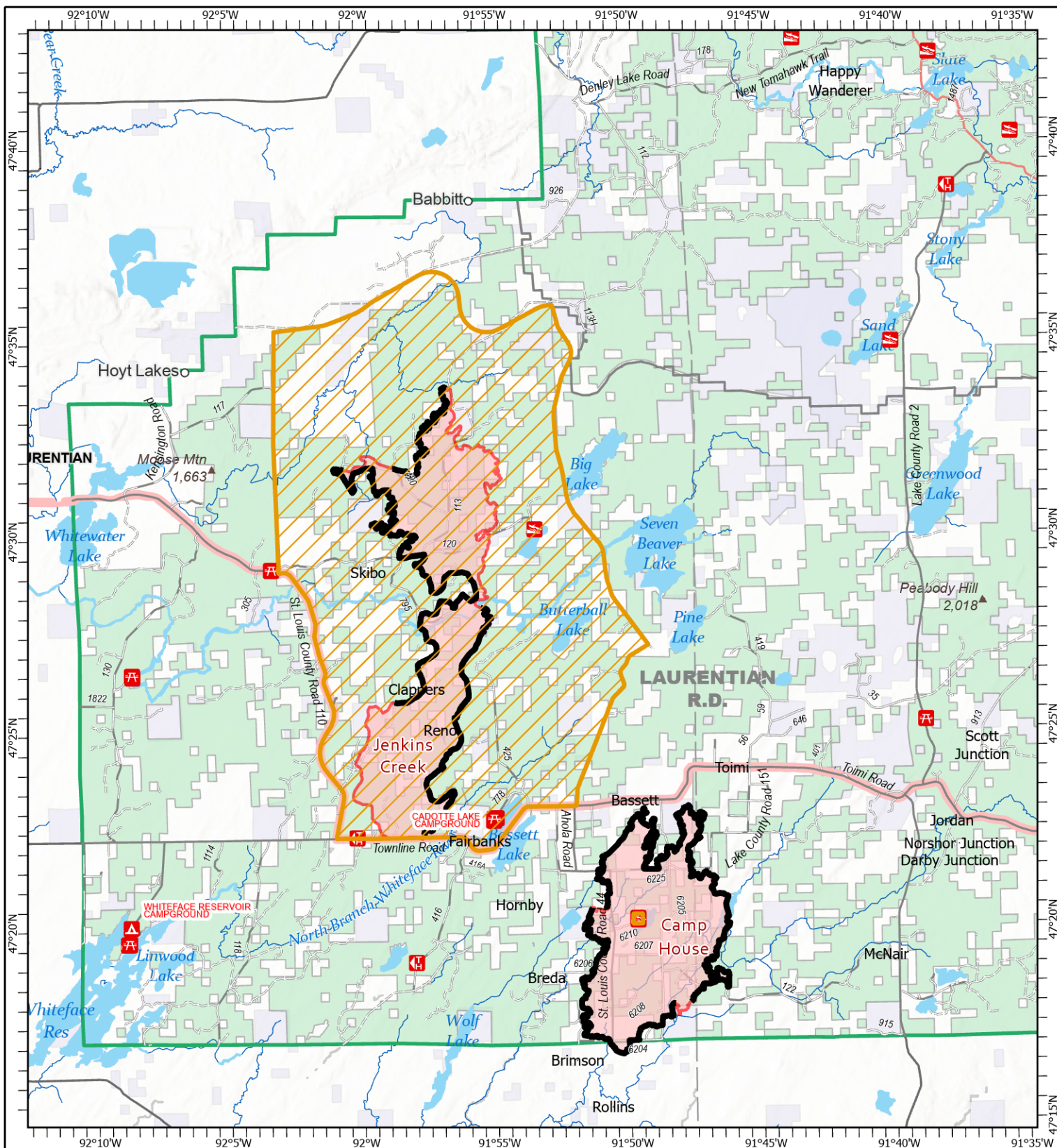
National Weather Service Forecast: Today, the high temperature is expected to be 63 degrees F, and the humidity will be 37%. Winds will be five to seven mph from the northeast at 6 mph. There is a chance of scatter showers later today. Visit www.weather.gov/dlh for current updates.

Laurentian Ranger District closures: [Emergency Forest Order 09-09-25-05](#) prohibits visitor entry to some camp sites and recreational areas. **This closure order was changed on Friday 5/23 to be smaller than its original size.** See Forest Order Exhibit A for a list of closure areas and Exhibit B for a map. The closure may be modified or extended as conditions allow. More information can be found on the Superior National Forest's website under Alerts. A map can be accessed at tinyurl.com/BrimsonComplexClosureOrderMap

Current Burning Restrictions: https://www.dnr.state.mn.us/forestry/fire/firerating_restrictions.html

Public Reminder: "If you fly, we can't."

When someone flies a drone near the fire, it creates a safety hazard that shuts down aerial operations.



Public Information

Camp House
MN-2QS-001729
05/24/2025 Day

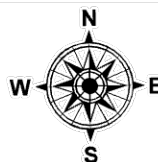
Jenkins Creek
MN-SUF-001789
05/24/2025 Day

12,071 acres at 5/20/2025 2020hrs

16,089 acres at 5/23/2025 0950hrs



1:250,000 | EA IMT | 5/23/2025 2056
Acres from IR and GPS Acres from IR and GPS
North American 1983 Datum, Lat/Long Grid



- Contained Fire Edge
- Wildfire Perimeter
- Paved Road
- Gravel Road
- Dirt (Not Paved)
- Road, Not Maintained for Passenger Car
- Forest Closure Area