



Camp House and Jenkins Creek Fires Update

Saturday, May 24, 2025

Eastern Area Complex Incident Mgt. Team

Incident Commander: Brian Jenkins

Fire Information: 218-206-6805 9 a.m. to 8 p.m.

Inciweb: <https://inciweb.wildfire.gov/incident-information/mnmns-camp-house>

Email: 2025.camphouse@firenet.gov

CAMP HOUSE FIRE

Size: 12,071 acres

Start Date: 05/11/2025

Location: Brimson, MN

Containment: 90%

Personnel: 233

Cause: Under investigation

The Camp House Fire remains 90% contained with no new growth. Resources recently reassigned to a dedicated Initial Attack (IA) group are prepared to respond to any new fires, especially with the expected increase in tourist visitation over the holiday weekend. Although much of the fire is under control, areas with lingering heat still pose risks. Containment is a positive sign, but it does not mean the fire is completely out. A fire is fully extinguished only when all heat and smoke are eliminated. Crews continue to patrol the fire line, locating and extinguishing the remaining hot spots. In areas where the fire is contained, crews are now focusing on suppression repair on contingency lines, restoring disturbed areas from suppression activities, implementing erosion control measures, removing hazards, protecting natural resources, and repairing fire lines to return them to their natural condition.

JENKINS CREEK FIRE

Size: 16,089 acres

Start Date: 05/12/2025

Location: T57N R13W Section 3

Containment: 78%

Personnel: 195

Cause: Human-caused

Fire crews continue to make steady progress around the perimeter, gaining an additional 8% containment. Over the next two days, mostly sunny skies, light winds, and low humidity could lead to some additional fire growth. However, fire spread is expected to be slow due to current containment efforts. Today, crews will perform chipping, hazard tree removal, and log hauling operations along the northwest edge near Skibo to reduce roadside fuels and improve public safety. The most active heat remains in the northern interior, where crews are engaged in mop-up and patrols to locate and extinguish hot spots within the fire perimeter. Aerial resources remain active in fire suppression and can assist the nearby forest and surrounding area, if needed. A transfer of command to a new incident management team will occur on Tuesday, May 27.

Evacuation, Road Closure, and Homeowner Access Information

St. Louis County: <https://tinyurl.com/LakeCoMnEvacuationMap>: Residents of Skibo were allowed to return to their property; however, Skibo Road will remain closed to all other traffic. Hwy-44 and CR-110/FH-11 reopened to through traffic. Skibo Road and Forest Road 113 will remain closed eastbound from CR-110/FH-11. Bundle Lake Road is closed northbound from Hwy-16/Town Line Rd.

Lake County: <https://tinyurl.com/StLouisCoSituationMap>. The Lake County Sheriff's office announced that all evacuations have been lifted in that county.

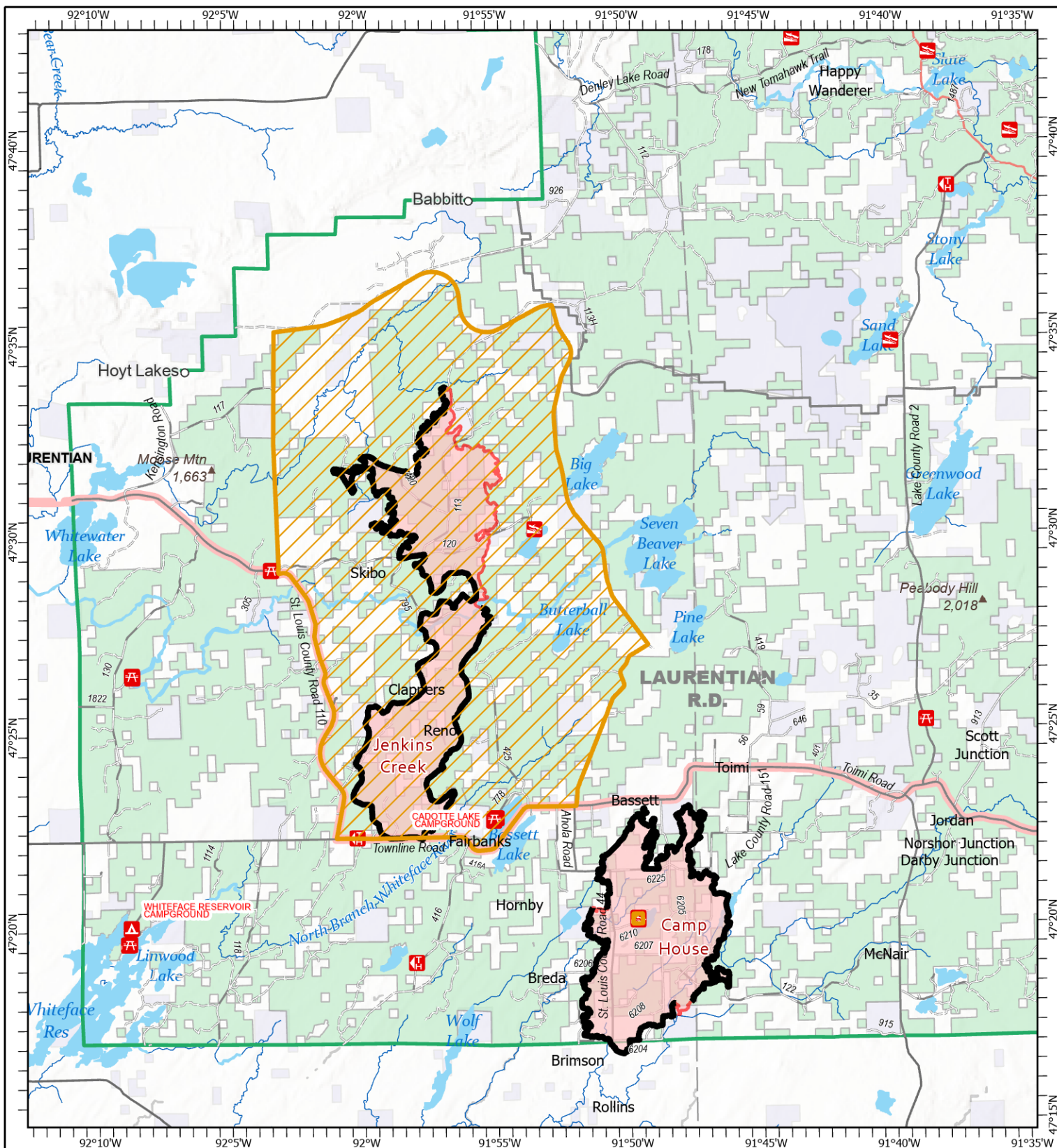
National Weather Service Forecast: Today, the high temperature is expected to be 68 degrees F, and the humidity will be 28%. Winds will be out of the southwest at 5 to 6 mph, shifting to the west. Visit www.weather.gov/dlh for current updates.

Laurentian Ranger District closures: [Emergency Forest Order 09-09-25-05](https://www.dnr.state.mn.us/forestry/fire/emergency_forest_order_09-09-25-05) restricts access to certain campsites and recreation areas. As of Friday, 5/23, the closure area has been reduced. For details, see Exhibit A (closure list) and Exhibit B (map). The order may change as conditions evolve. Visit the Superior National Forest website under *Alerts* or view the map at tinyurl.com/BrimsonComplexClosureOrderMap

Current Burning Restrictions: https://www.dnr.state.mn.us/forestry/fire/firerating_restrictions.html

Public Reminder: "Drive Cautiously"

With holiday traffic and active fire operations, safety risks are higher. Stay alert, drive carefully, and watch for crews.



Public Information

Camp House
MN-2QS-001729
05/25/2025 Day

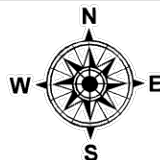
Jenkins Creek
MN-SUF-001789
05/25/2025 Day

12,071 acres at 5/20/2025 2020hrs

16,089 acres at 5/23/2025 0950hrs



1:250,000 | EA IMT | 5/24/2025 2100
Acres from IR and GPS Acres from IR and GPS
North American 1983 Datum, Lat/Long Grid



- Contained Fire Edge
- Wildfire Perimeter
- Paved Road
- Gravel Road
- Dirt (Not Paved)
- Road, Not Maintained for Passenger Car
- Forest Closure Area