



Camp House and Jenkins Creek Fires Update

Monday, May 26, 2025

Eastern Area Complex Incident Mgt. Team

Incident Commander: Brian Jenkins

Fire Information: 218-206-6805 9 a.m. to 8 p.m.

Inciweb: <https://inciweb.wildfire.gov/incident-information/mnmns-camp-house>

Email: 2025.camphouse@firenet.gov

CAMP HOUSE FIRE

Size: 12,071 acres

Location: Brimson, MN

Personnel: 202

Start Date: 05/11/2025

Containment: 90%

Cause: Under investigation

The Camp House Fire continues to show minimal activity, with no additional fire spread reported. Containment holds at 90% due to residual interior heat from smoldering heavy, large fuels. The fire will be fully contained once no heat is detected within the perimeter. Visible smoke is limited, but crews continue to monitor and address hotspots. Crews are actively patrolling the fire line and conducting backhaul operations to recover and prepare equipment for future use. Suppression repair also continues, focusing on restoring fire lines, reducing erosion, removing hazards, and protecting natural and cultural resources—key steps for long-term recovery.

JENKINS CREEK FIRE

Size: 16,089 acres

Location: T57N R13W Section 3

Personnel: 249

Start Date: 05/12/2025

Containment: 78%

Cause: Human-caused

Fire activity remains minimal on the Jenkins Creek Fire. Crews continue to patrol and monitor the area while conducting chipping, log hauling, and hazard removal operations near Skibo. These efforts are essential to ensure public safety and access on forest roads impacted by the fire, in preparation for the eventual lifting of the forest closure order. A National Incident Management Organization (NIMO) team will arrive tomorrow to begin transitioning with the Eastern Area Complex IMT and assume command on Tuesday. NIMO teams are highly experienced and specialize in managing complex, long-duration incidents with a focus on strategy and coordination. With the fire stable and operations progressing well, fire managers are confident the incoming NIMO team and remaining resources will ensure a smooth transition and continued progress.

Evacuation, Road Closure, and Homeowner Access Information

St. Louis County: <https://tinyurl.com/LakeCoMnEvacuationMap>: Effective Monday, May 26th, 2025, at 8 a.m. all evacuation zones (Ready, Set, Go) of the Brimson Complex Fire will no longer be active. Bundle Lake Road will be reopened. Skibo Road and FR-113 will remain closed due to continued wood clearing and chipping. The public is reminded that the closure order for the Superior National Forest remains in effect for safety and resource protection.

Lake County: <https://tinyurl.com/StLouisCoSituationMap>. The Lake County Sheriff's office announced that all evacuations have been lifted in that county.

National Weather Service Forecast: Today's forecast for the fire area calls for a high of 71°F with dry conditions and light, variable winds. These factors will help prevent fire weather from reaching near-critical levels. There is a chance of isolated showers in the afternoon, but most locations will remain dry. Visit www.weather.gov/dlh for updates.

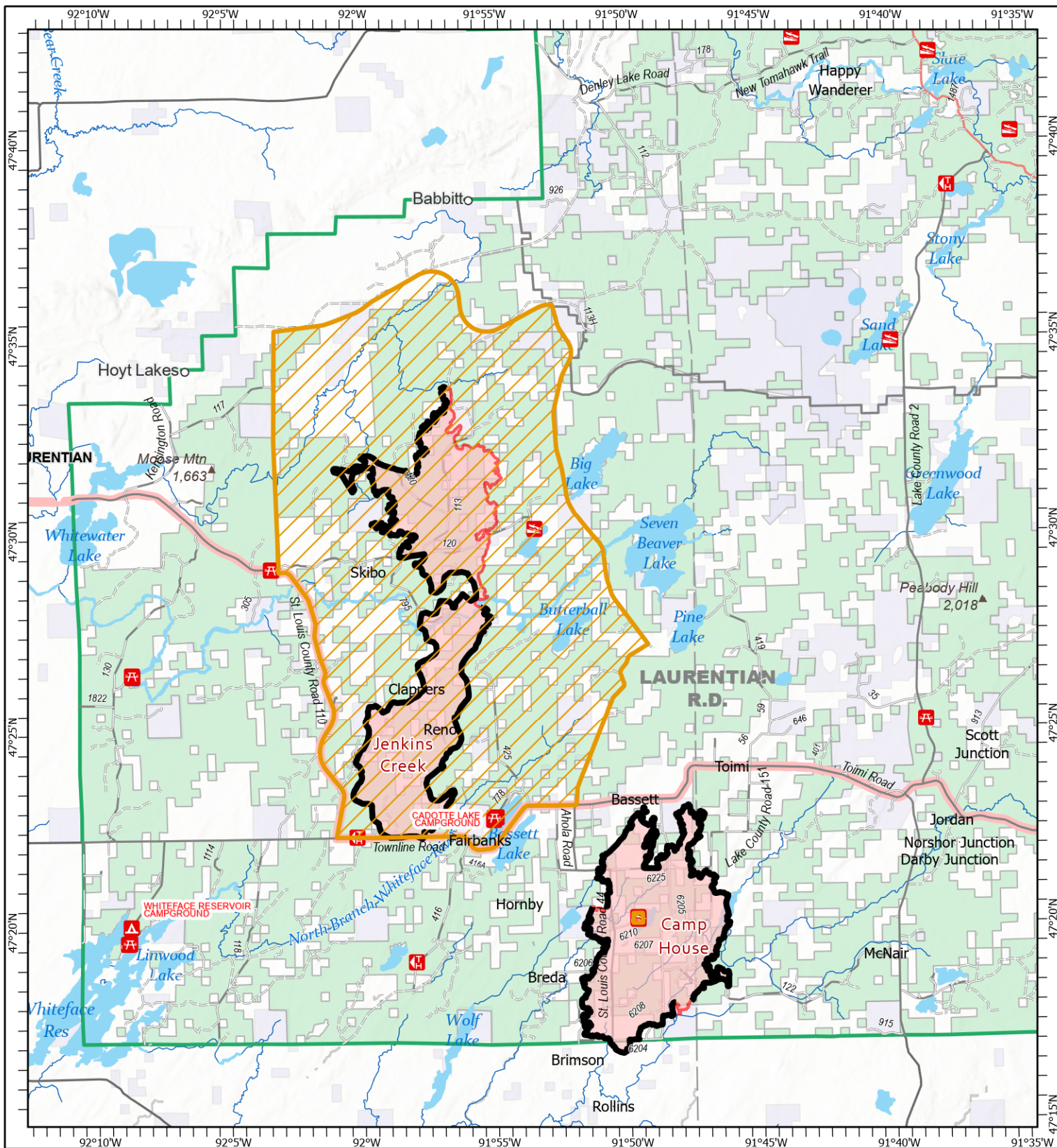
Laurentian Ranger District closures: [Emergency Forest Order 09-09-25-05](#) restricts access to specific campsites and recreation areas. See Exhibit A (closure list) and Exhibit B (map) for details. The order may change as conditions evolve. Visit the Superior National Forest website under *Alerts* or view the map at tinyurl.com/BrimsonComplexClosureOrderMap.

Current Burning Restrictions: https://www.dnr.state.mn.us/forestry/fire/firerating_restrictions.html

Public Reminder: “Stay Vigilant: Fire Season Is Just Beginning”

As the Camp Creek and Jenkins Creek fires wind down, we mustn't let our guard down. While these incidents are nearing full containment, changing fire weather conditions in the region are signaling a shift in activity, not a pause. Warmer temperatures, lower humidity, and increasing winds are setting the stage for new ignitions and rapid fire spread. Fine fuels are drying quickly, and receptive landscapes remain vulnerable.

Stay ready. Stay aware. Stay safe.



Public Information

Camp House
MN-2QS-001729
05/26/2025 Day

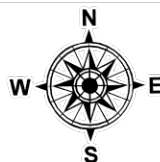
Jenkins Creek
MN-SUF-001789
05/26/2025 Day

12,071 acres at 5/20/2025 2020hrs

16,089 acres at 5/23/2025 0950hrs



1:250,000 | EA IMT | 5/25/2025 2034
Acres from IR and GPS Acres from IR and GPS
North American 1983 Datum, Lat/Long Grid



- Contained Fire Edge
- Wildfire Perimeter
- Paved Road
- Gravel Road
- Dirt (Not Paved)
- Road, Not Maintained for Passenger Car
- Forest Closure Area