



Camp House and Jenkins Creek Fires Update

Tuesday, May 27, 2025

Eastern Area Complex Incident Mgt. Team

Incident Commander: Brian Jenkins

Fire Information: 218-206-6805 9 a.m. to 8 p.m.

Inciweb: <https://inciweb.wildfire.gov/incident-information/mnmns-camp-house>

Email: 2025.camphouse@firenet.gov

CAMP HOUSE FIRE

Size: 12,071 acres

Location: Brimson, MN

Personnel: 184

Start Date: 05/11/2025

Containment: 90%

Cause: Under investigation

Suppression repair continues across the fire area, with a concentrated effort around Camp House. Priority is being given to locations where repair activities can help protect ecologically significant wild rice lakes. Wild rice is highly sensitive to changes in water levels and water quality, thriving only under specific chemical and ecological conditions. As an indicator species for aquatic health and a critical food source for migrating waterfowl, protecting these habitats is a key objective in the repair process. Crews are actively recontouring dozer lines by redistributing mounded soil and returning displaced vegetation to disturbed areas. These actions promote faster recovery of native plant communities and help prevent the spread of invasive species. Native vegetation is more effective at stabilizing soil, reducing the risk of sediment runoff into nearby lakes, and helping to preserve water quality for sensitive ecosystems like wild rice habitats. Tomorrow, the Camp House Fire will be turned back over to the Minnesota Department of Natural Resources for continued management.

JENKINS CREEK FIRE

Size: 16,089 acres

Location: T57N R13W Section 3

Personnel: 249

Start Date: 05/12/2025

Containment: 84%

Cause: Human-caused

Crews continue making progress on the Jenkins Creek Fire, focusing on mop-up and patrol, hazard tree removal, log hauling, and road repair. Work is advancing from the southern perimeter and moving westward around the fire's edge. Fire suppression efforts and the use of heavy equipment have impacted many forest roads, contributing to erosion, drainage issues, and safety concerns. Repairs are essential for restoring safe access, reducing hazards, and supporting long-term recovery and future forest use. The National Incident Management Organization (NIMO) team has begun arriving and is coordinating with the Eastern Area Incident Management Team to ensure a smooth transition before assuming command of both the Jenkins Creek and Horse River Fires at 6 a.m. on Wednesday. NIMO will assume command of both the Jenkins Creek and Horse River Fires at 7 a.m. on Wednesday. Horse Creek is burning within the Boundary Waters Canoe Area Wilderness, northeast of the Jenkins Creek Fire. With added capacity and experience in complex terrain, NIMO is well-positioned to manage both fires.

Evacuation, Road Closure, and Homeowner Access Information

St. Louis County: <https://tinyurl.com/LakeCoMnEvacuationMap>: All evacuation zones (Ready, Set, Go) for the Brimson Complex Fire are no longer active, and Bundle Lake Road has reopened. Skibo Road and FR-113 remain closed due to ongoing wood clearing and chipping. The Superior National Forest closure order remains in place to ensure public safety and protect resources.

Lake County: <https://tinyurl.com/StLouisCoSituationMap>. The Lake County Sheriff's office announced that all evacuations have been lifted in that county.

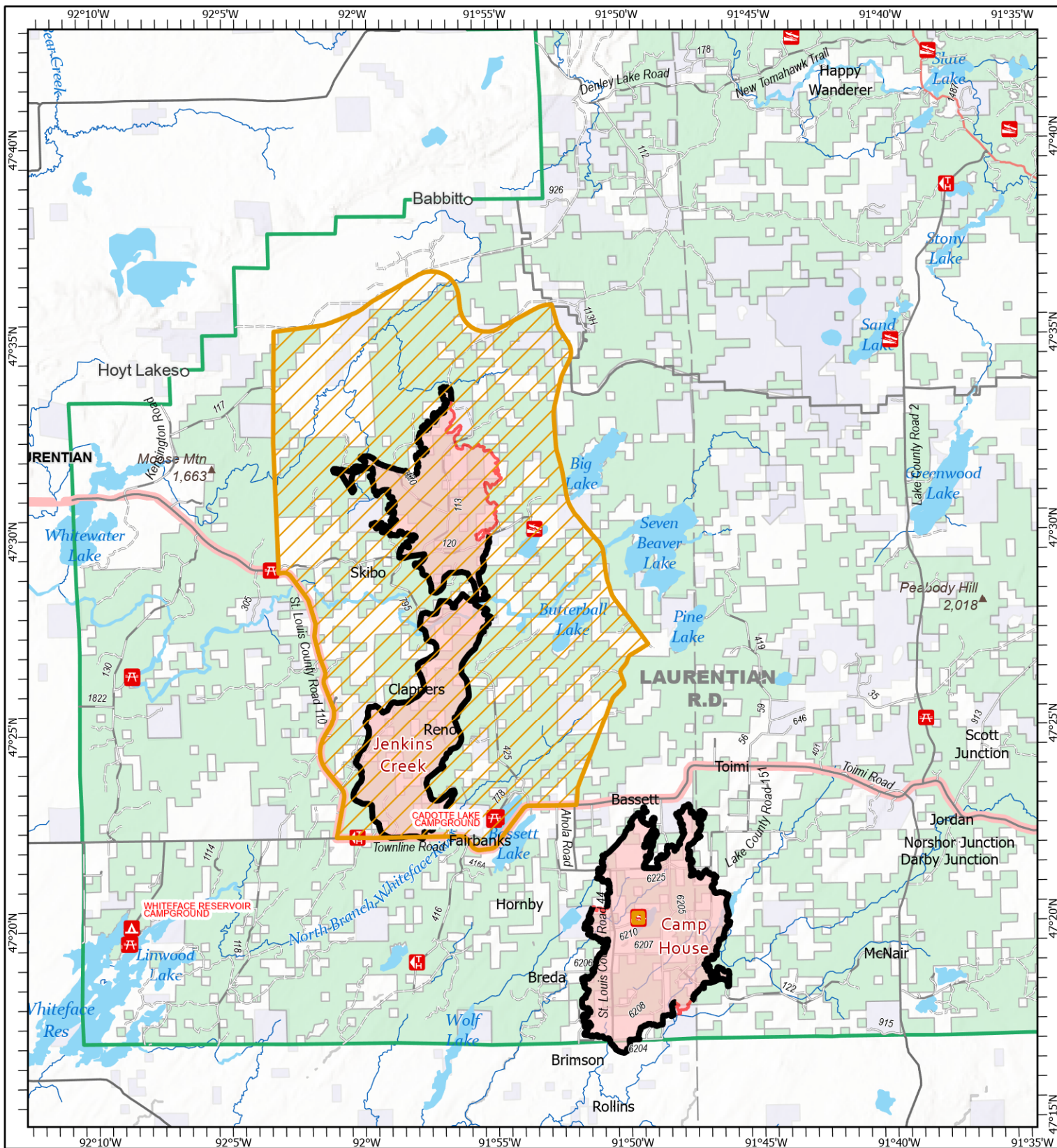
National Weather Service Forecast: Today's fire weather brings increasing clouds, with scattered showers expected after noon. Humidity will be slightly higher than yesterday. Light southeast winds are forecast, with a 20% chance of wetting rain. Visit www.weather.gov/dlh for updates.

Laurentian Ranger District closures: [Emergency Forest Order 09-09-25-05](#) restricts access to specific campsites and recreation areas. See Exhibit A (closure list) and Exhibit B (map) for details. The order may change as conditions evolve. Visit the Superior National Forest website under *Alerts* or view the map at tinyurl.com/BrimsonComplexClosureOrderMap.

Current Burning Restrictions: https://www.dnr.state.mn.us/forestry/fire/firerating_restrictions.html

Public Reminder: "Stay Vigilant: Fire Season Is Not Over Yet"

As the Camp Creek and Jenkins Creek fires wind down, we must not let our guard down. Though nearing full containment, shifting fire weather—warmer temperatures, lower humidity, and increasing winds—signals rising risk, not rest. Fine fuels are drying quickly, and receptive landscapes remain vulnerable. **Stay ready. Stay aware. Stay safe.**



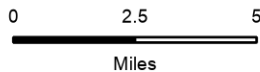
Public Information

Camp House
MN-2QS-001729
05/27/2025 Day

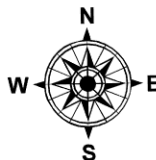
Jenkins Creek
MN-SUF-001789
05/27/2025 Day

12,071 acres at 5/20/2025 2020hrs

16,089 acres at 5/23/2025 0950hrs



1:250,000 | EA IMT | 5/26/2025 1955
Acres from IR and GPS Acres from IR and GPS
North American 1983 Datum, Lat/Long Grid



- Contained Fire Edge
- Wildfire Perimeter
- Paved Road
- Gravel Road
- Dirt (Not Paved)
- Road, Not Maintained for Passenger Car
- Forest Closure Area