



Camp House and Jenkins Creek Fires Update

Tuesday, May 20, 2025

Eastern Area Complex Incident Mgt. Team Incident Commander: Brian Jenkins (effective 05/14/2025)

Fire Information: 218-206-6805 9 a.m. to 8 p.m.

Inciweb: <https://inciweb.wildfire.gov/incident-information/mnmns-camp-house>

Email: 2025.camphouse@firenet.gov

Yesterday's Community Meeting: Thank you to everyone that attended the Jenkins Creek and Camp House Fires community meeting last night in Aurora. Over 150 people attended. We apologize to anyone who tried to log in to the livestream link – technical issues occurred. A recording of the meeting will be posted today on the [EA IMT Facebook](#) page. Also, the meeting can [viewed on WIDO's website](#).

Camp House Fire Quick Facts

Size: 12,106 acres

Location: Brimson, MN

Personnel: 394

Start Date: 05/11/2025

Containment: 59%

Cause: Under investigation

Camp House Fire: Containment lines continued to be built and strengthened around the perimeter of the Camp House Fire yesterday in preparation for today's windy conditions. Crews and dozers worked around all areas of the fire, either enhancing containment line or finding and extinguishing hot spots. Helicopter and Unmanned Aerial Systems (UAS) supported firefighters on the ground to achieve these objectives. Masticator equipment was used along the south end to grind down and remove fallen trees, and will continue through today. All firefighters will be focused on maintaining containment lines and catching any flare-ups with today's strong and gusty winds.

Jenkins Creek Fire Quick Facts

Size: 16,694 acres

Location: T57N R13W Section 3

Personnel: 227

Start Date: 05/12/2025

Containment: 6%

Cause: Under investigation

Jenkins Creek Fire: Crews made good progress in establishing lines around the fire over the past few days. Firefighters assigned to a Structure Protection group established a firefighting plan for Skibo and Hoyt Lakes in case the fire advances in that direction. This work included adding fuel breaks and setting hose lays vital to slowing fire spread. Crews will continue to work along the entire perimeter of the fire today. More resources will be assigned to the western side of the fire to provide initial attack capabilities in the event of flare-ups triggered by today's gusty winds.

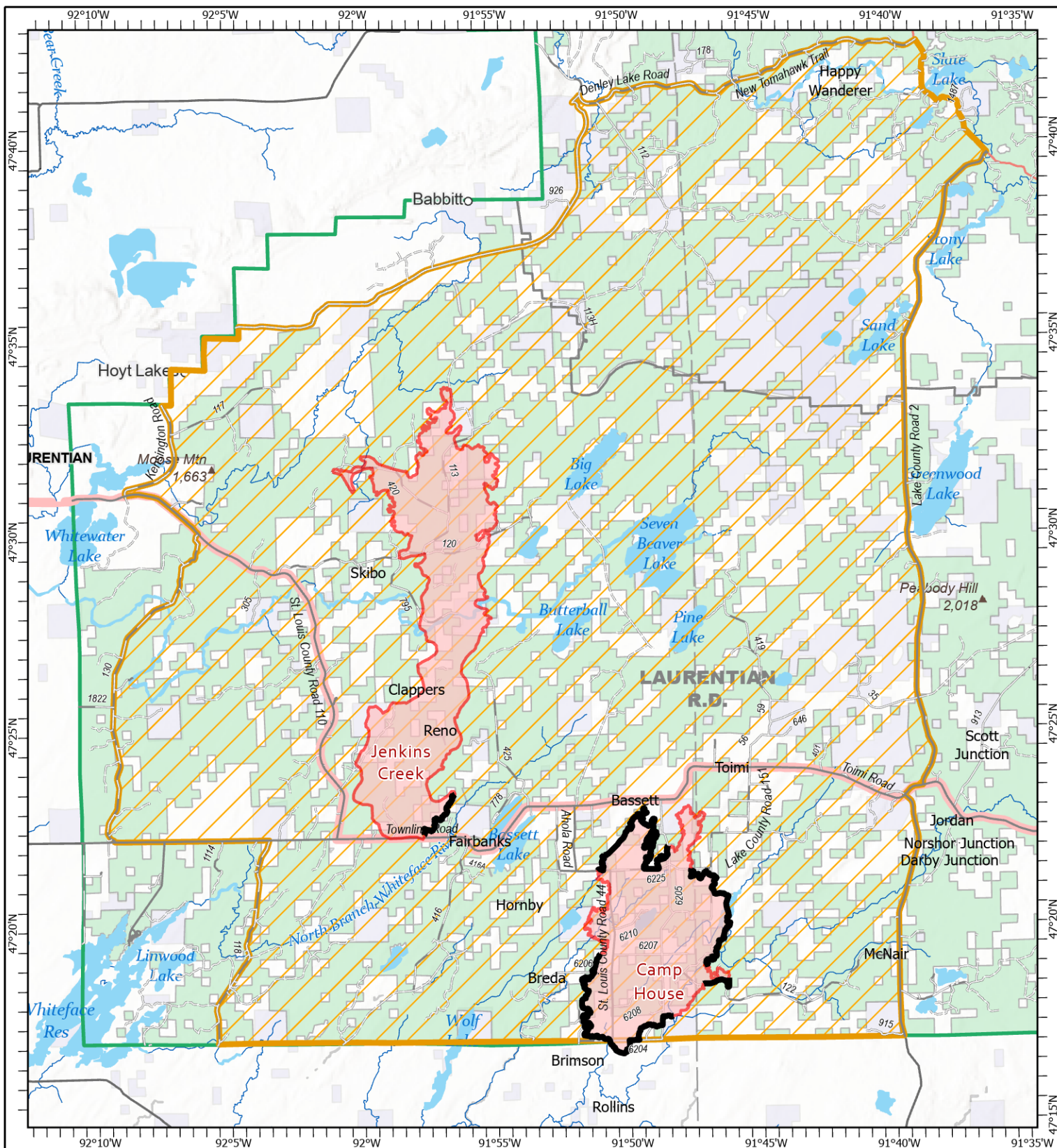
Evacuation, Road Closure, and Homeowner Access information for St. Louis County:

<https://tinyurl.com/StLouisCoSituationMap>. For Lake County: <https://tinyurl.com/LakeCoMnEvacuationMap>.

Additional changes to evacuations levels and road closures were announced by the St. Louis County Sheriff yesterday. Brimson Road is now open to through-traffic. The section of Hwy 44 south from Brimson Road is also open to through-traffic. Hwy 44 north from Brimson Road remains closed to Town Line Road. Additionally, Evacuation Zone 6 was downgraded to "Set" status. Vehicles should avoid stopping anywhere in the evacuation "Go" zones to minimize exposure and risk. Drivers are also asked to take extra caution due to the continued presence of emergency crews, utility crews, and other curious or distracted drivers.

National Weather Service Forecast: A wind advisory is in effect until 1 a.m. tonight. A red flag warning has been issued for St. Louis County today from noon to 9 p.m. Sunny skies with a high of 51 and 23% humidity. Winds will be from the east at a steady 6 to 16 mph, gusting to 42 mph. **Laurentian Ranger District closures:** Emergency Forest Order 09-09-25-05 prohibits visitor entry to some camp sites and recreational areas. See Forest Order Exhibit A for a list of closure areas and Exhibit B for a map of the area. The closure may be modified or extended as conditions allow. <https://www.fs.usda.gov/r09/superior/alerts/forest-order-09-09-25-05-brimson-complex-emergency-closure>

Current Burning Restrictions: https://www.dnr.state.mn.us/forestry/fire/firerating_restrictions.html



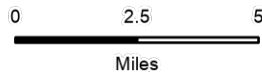
Public Information

Camp House
MN-2QS-001729
05/20/2025 Day

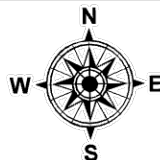
Jenkins Creek
MN-SUF-001789
05/20/2025 Day

12,106 acres at 5/19/2025 2020hrs

16,694 acres at 5/19/2025 2020hrs



1:250,000 | EA IMT | 5/19/2025 2042
Acres from IR and GPS Acres from IR and GPS
North American 1983 Datum, Lat/Long Grid



- Closure Areas
- Contained Fire Edge
- Wildfire Perimeter
- Paved Road
- Gravel Road
- Dirt (Not Paved)
- Road, Not Maintained for Passenger Car